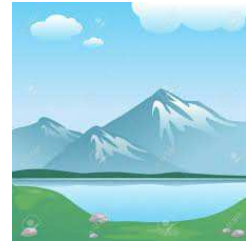


Investigating a Mountain Environment

Year 3 and 4 Trip



Dear parents and carers,

As part of Year 3 and 4's **Mountain** study, a visit has been booked to the Longendale Environmental Centre in the Peak District National Park. The children will have the opportunity to consolidate their learning about the features of a mountain, use field equipment and experience the scenery and wildlife in the National Park. In order to keep the costs down, the trip has been organised over two days with Miss Fleet's class being divided into two groups.

Dates:

Tuesday 12th March: Miss Gallienne's class with **Miss Fleet's Year 4 children**

Wednesday 13th March: Mrs Davies' class with **Miss Fleet's Year 3 children**

Cost: The cost of the trip is **£12.00** which covers entry fee and the travel costs.

Lunch: The children will need a packed lunch. If your child is entitled to a free lunch, a packed lunch will be provided.

Travel: The children will be travelling by coach, leaving at 9.15 and returning at 3pm.

Clothing: It is very important that the children wear the correct clothing on this visit. They will spend the majority of the day outside and they need to keep warm. The children will need to **wear outdoor clothing, a warm water proof coat, trousers/ track suit bottoms (not jeans), jumper/fleece, walking boots or sturdy trainers, hat, scarf and gloves.**

Please sign the return slip below and return it to the school office. Payment for this trip will only be accepted via the school website, using Paypal. Please contact the office if you need a username and password.

Thank you.

Year 3 and 4 team

.....
I/We **give / do not give** permission for to attend the trip

Emergency contact

Name/number