

Dinner money is £2.20 per day

Dinner money this half term is £77.00

Friday Lunch Club is £15.40

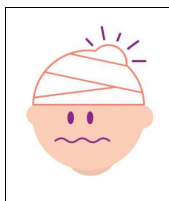
Monday and Friday Lunch Club is £30.80

School meal arrangements can only be changed in the first two weeks of a half term.



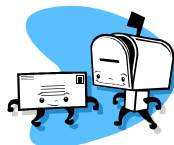
First Aid

We are currently using a wrist band system for children who bump their heads throughout the school day. The bright wristband will alert parents, staff, kidzone and afterschool club staff that a child has had a bump to the head. A phone call home will be made to parents to make them aware of the bump.



Contact Details

Please ensure you tell the office if any of your contact details have changed as soon as possible.



Afterschool Clubs

Clubs continue to run this half term, the last club will run on Thursday 11th December, there will be no clubs week beginning Monday 15th December.



There is now a suggestion box in the main reception. Please feel free to add any suggestions/comments.

St Paul's C.E. Primary School

Newsletter

Autumn Term 2 2014

www.stpaulswithington.co.uk

Caring about Learning | Learning about Caring



Dates for your diary



- Bike Right—Wednesday 6th & 13th November
- Early Years Christmas Show—Friday 12th December 2.00pm
- KS1 Christmas Show—Thursday 11th December 9.45am
- KS2 Christmas Show—Wednesday 10th December 2.00pm & Wednesday 10th December 6.00pm
- School closes on Friday 19th December for Christmas holidays and re-opens on Monday 5th January
- Christmas Dinner Day—Wednesday 17th December, deadline for orders is Friday 28th November
- Christmas Party Day—Thursday 18th December
- Christmas Carol Service— Friday 19th December at 2.00pm
- PTA Christmas Cake Sale— Friday 5th December

PTA

The deadline for Tea Towel orders is Wednesday 12th December—designs are now on display in the reception area. Please see the office for copies of the order form.



Follow us on twitter @stpaulspri



An update from Ms Sorohan

Welcome Back!

We are half a term into our new schemes of work for the new curriculum, I hope the children are enjoying their new topics and discussing/researching these topics with you at home. If you have any questions please ask your child's teacher at parents evening next week.

A big thank you to all parents who are working hard to ensure their children attend school everyday and on time. School begins at 8.55am all children should be in the playground at 8.50am ready to come into school at 8.55am when the bell rings.

We begin the build up to Christmas this term and will be enjoying performances by KS2, KS1 and Foundation Stage at the end. We are trialling a new time for performances this year with KS1's performance taking place at 9.45am, so hopefully more parents will be able to attend.

Be on time



at five to nine

PayPal

We are embracing new technology in the school office to become a cashless office. If you can pay for school dinners via our website and PayPal that would be very much appreciated. We have had lots of positive feedback from parents already using this facility. Please give it a try and get log-in details from the school office. You can also use PayPal to pay for school trips, clubs and music tuition. We are now able to take debit/credit card payments at the school office for amounts over £10.00.



Early Years

The children are now all happily settled into our early years. We are continuing our learning around the topic of 'Celebrations' with the big theme this half term being Christmas. We have begun learning winter songs and actions for our Christmas show. Please read our class weekly newsletters for information about what's going on in each class.

Year 1/2

We will continue to focus on significant events from the past and this half term we will be linking them with art and D&T.

We will be holding Literacy and Maths workshops:

Maths - Monday 17th November at 9am

Literacy - Wednesday 19th November at 9am

It's that time of year again and the children will very shortly start practising for their Christmas production.

Year 3/4

Year 3 and 4 have enjoyed learning about the Stone Age.

This term we will be focusing on the Bronze Age and designing and making roundhouses in DT. We will be investigating living things and their habitats in Science.

Year 5/6

What a fantastic first half term! We are continuing with our 'Battle of Britain' topic. Please can everyone ensure they have PE kits in school as we are finding lots of 5/6 children don't have trainers/pumps for their lessons. Year 5 please remember we are now collecting payments for Ghyll Head 2015.